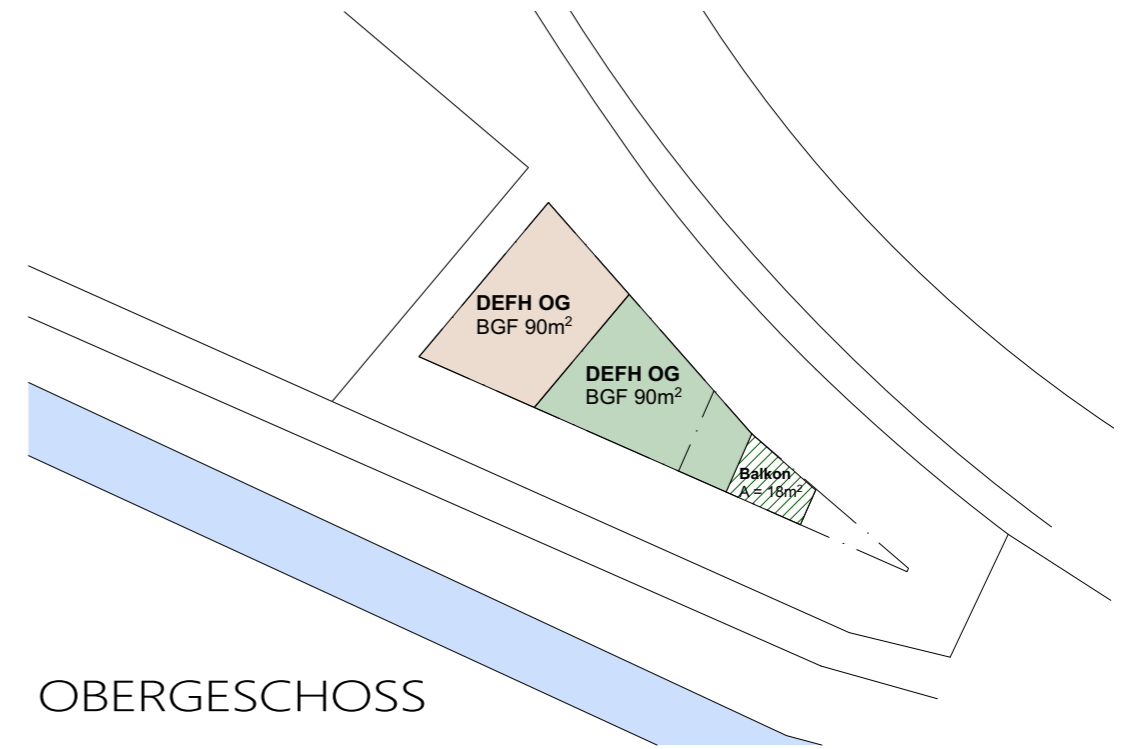
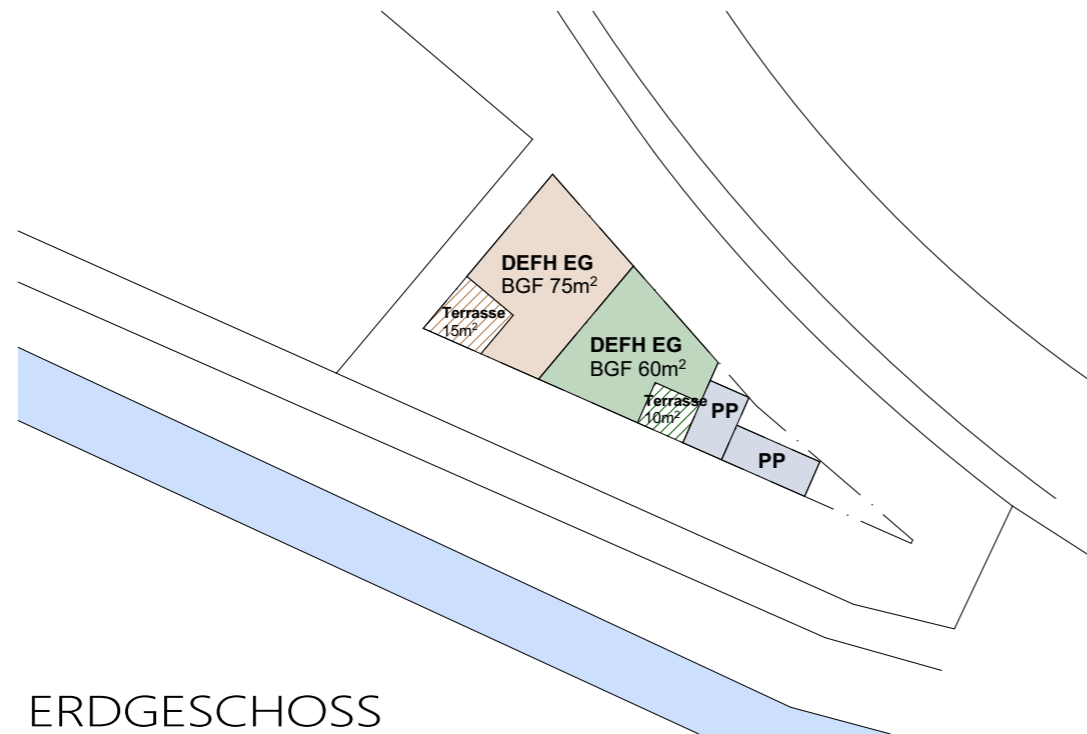


ATTIKA



OBERGESCHOSS



ERDGESCHOSS



UNTERGESCHOSS

Machbarkeitsstudie

Waltenschwil Wohnen am Bach

**archi-
neo**

architektur und bauleitung

archineo gmbh, aeschstrasse 20, 5610 wohlen, 056 621 30 30, wicki@archineo.ch

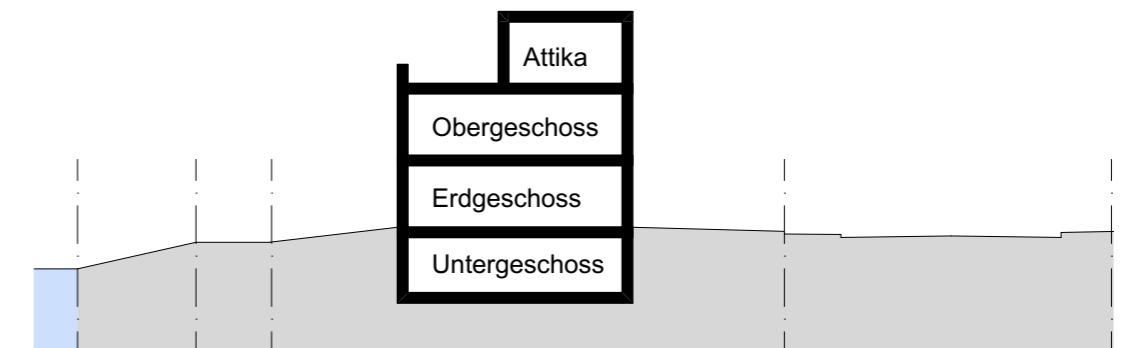
Objekt 2110:

Vorstudie
Parelle
Waltenschwil

Bauherr:

Silvio Müller

-	A3	20.04.2021	rev.
mw	.	.	-



SCHNITT